

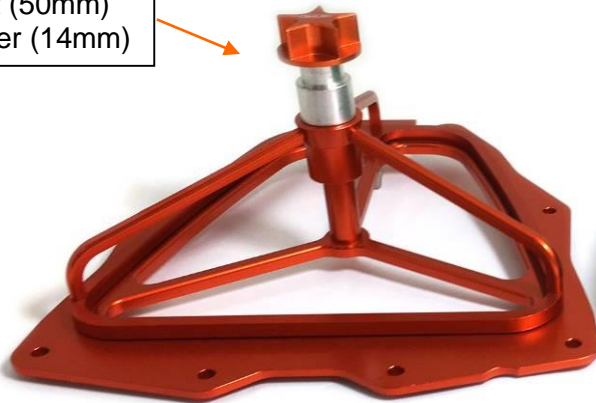


## Part Number 152220ABK

### Airbox Kit Yamaha YZF 250/450 WRF250/450

(incl. Air Filter BIG (FR), Airbox Kit, Aluminium Cage, Aluminum Sealing Ring, Bolt 50mm, Spacer 14mm, Mounting Hardware)

Bolt (50mm)  
Spacer (14mm)

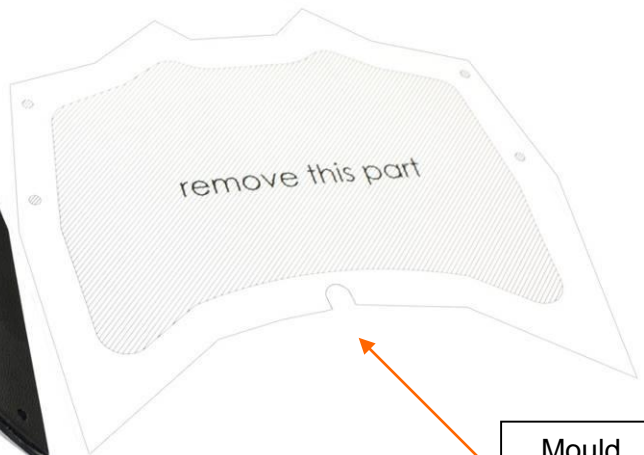


Aluminium Cage  
+ Sealing Ring



Air Filter (FR) BIG

Airbox lid



Mould  
sticker

Screws and  
nuts





**Instructions:**

Step 1:

Dismantle the OEM airbox (including air intakes) from the bike. (Picture 1)

Picture 1



Step 2:

Drill out the inner plastic (black) part. (see pictures 2 and 3)

Picture 2



Picture 3



Step 3:

Drill out four rivets (using a 4mm (5/32 inch) drill) out of the airbox as shown on picture 4 and 5.

Picture 4



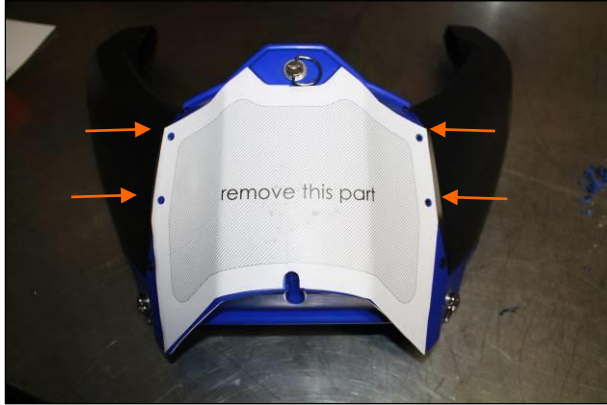
Picture 5



Step 4:

Attach the mould sticker onto the airbox. The four holes of the sticker must be placed at the exact same place as the drilled out rivets. (Picture 6)

Picture 6



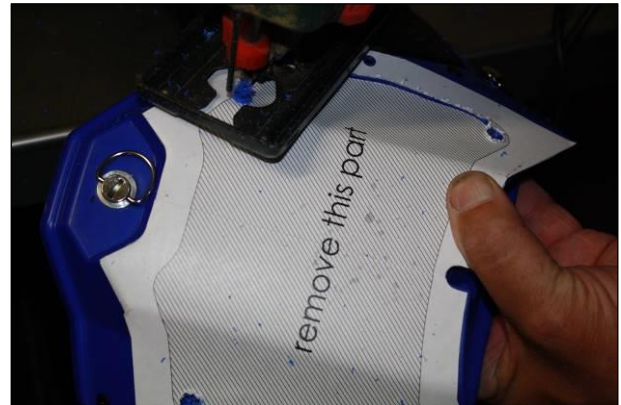
Step 5:

Cut out the marked part of the sticker using a jigsaw. Before you start cutting, drill out one or more holes to start. After cutting out the marked part, remove the remaining sticker. (Picture 7, 8, 9)

Picture 7



Picture 8



Picture 9





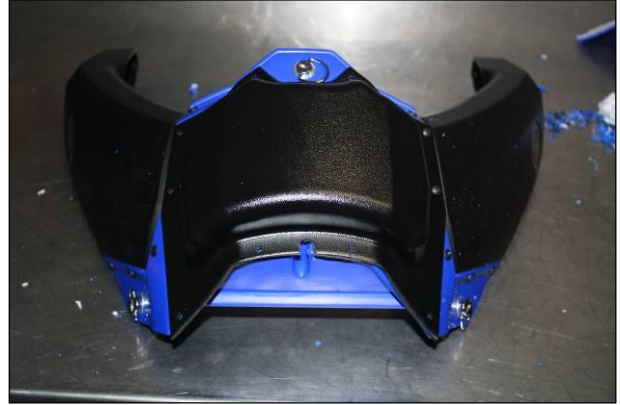
Step 6:

Place the Airbox Lid onto the airbox and mount the screws and nuts in the four open holes. (Picture 10, 11)

Picture 10



Picture 11



Step 7:

Drill the six other holes out of the airbox using a 4mm (5/32 inch) drill. Use the six screws and bolts to tighten the airbox lid. (Picture 12, 13)

Picture 12



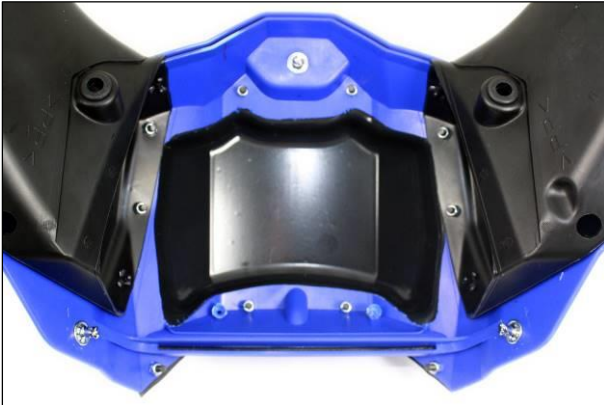
Picture 13



Step 9:

Mount the upgraded airbox back onto your bike. (Picture 15)

Picture 14



Picture 15



Step 10:  
Remove the OEM air filter. (Picture 16)

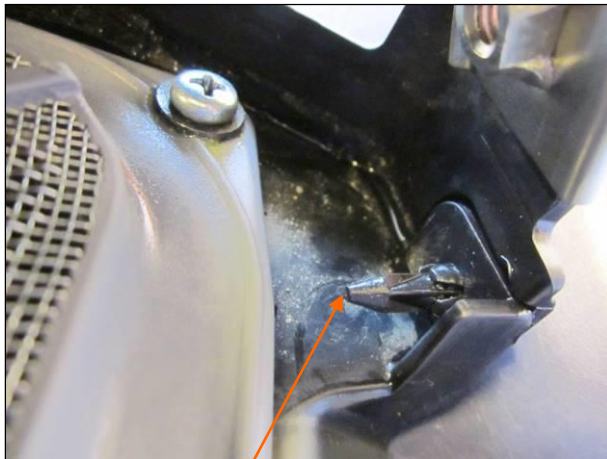
Picture 16



Bolt 1

Step 11:  
Press the push rivet outward (picture 16 and 17) and remove Bolt 1 (picture 16 and 18).

Picture 17



Push rivet outward

Picture 18



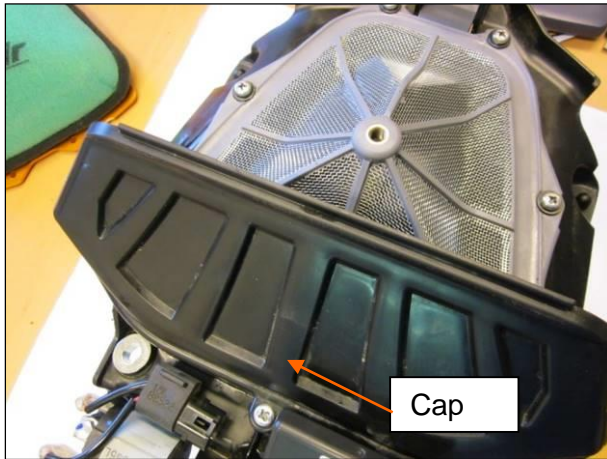
Bolt 1



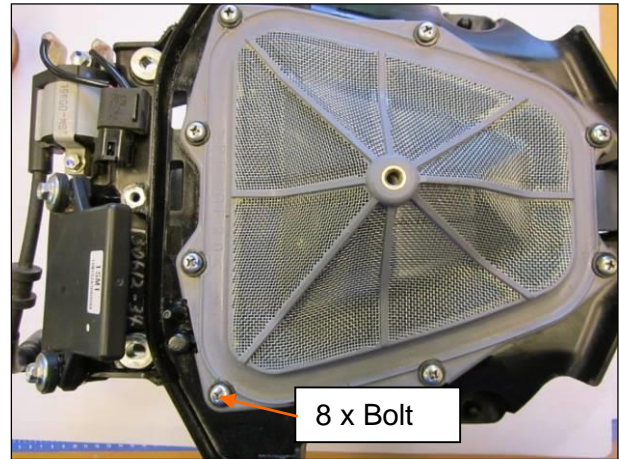
Step 12:

Remove the cap and remove the 8 OEM bolts (picture 19 and 20).

Picture 19



Picture 20

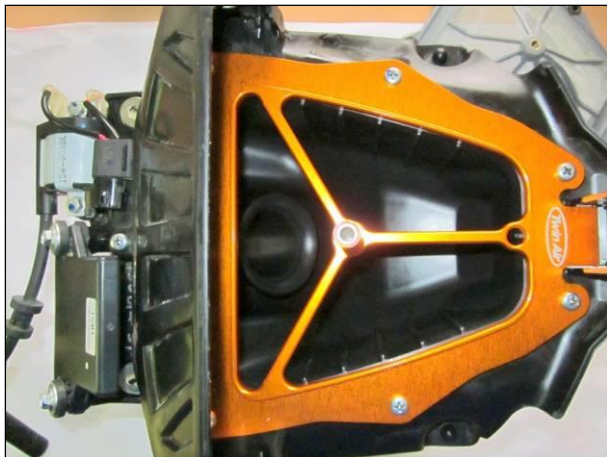


Step 13:

Install the Twin Air bottom aluminium flange on the airbox with the stock bolts (picture 21). Then install the cap back on the airbox.

Install the assembled Twin Air Filter and aluminium cage onto the Twin Air bottom aluminium flange (picture 22).

Picture 21



Picture 22



If you have any other questions feel free to contact us. For contact information go to [www.twinair.com](http://www.twinair.com) or [www.twinairusa.com](http://www.twinairusa.com).

**Twin Air Parts and Accessories**

- PowerFlow Replacement Air Filter: #152220FRBIG
- Replacement Oil Filter: #140017
- Airbox Cleaning Cover: #160108

**Twin Air Cleaning and Oiling Products**

- Bio Dirt Remover: #159004
- Liquid Bio Power: #159017
- Bio Pack (Dirt Remover / Liquid Power): #159020
- Bio Spray: #159018M
- Twin Air Bio System: #159000BIO

For more details or to purchase these or other Twin Air products go to [www.twinair.com](http://www.twinair.com), [www.twinairusa.com](http://www.twinairusa.com) or visit your local Twin Air Authorized Dealer.