



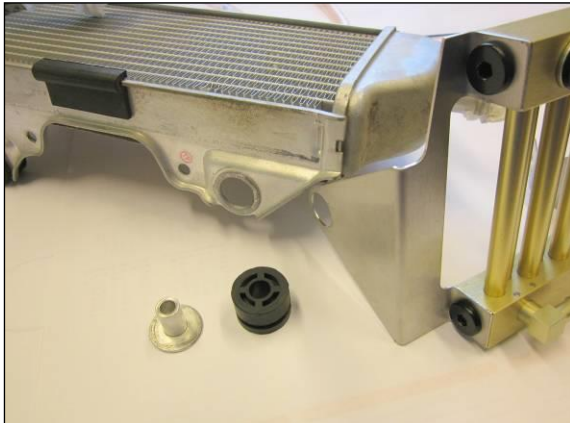
Step 1:

Remove the coolant. Remove the left side radiator shroud and the bolts at the front of the radiator (picture6); also remove the oil filter cap.

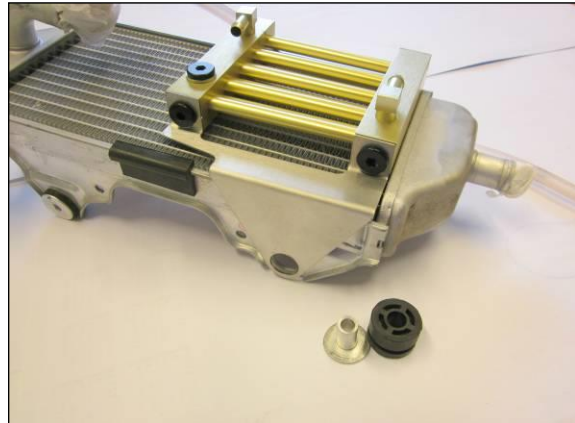
Step 2:

Install the oil-cooler at the bottom portion of the right radiator (Like Picture 1, 2, 3 and 4)

Picture 1



Picture 2



Picture 3



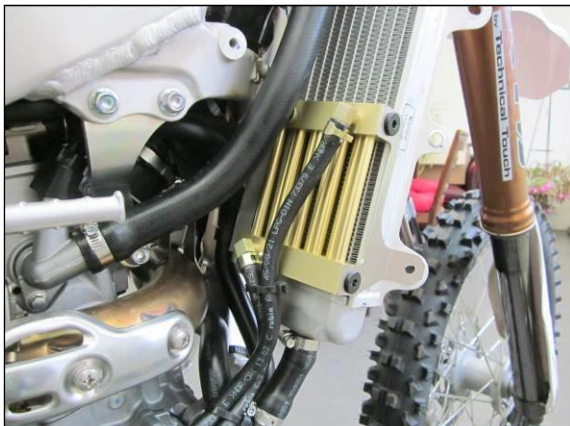
Picture 4



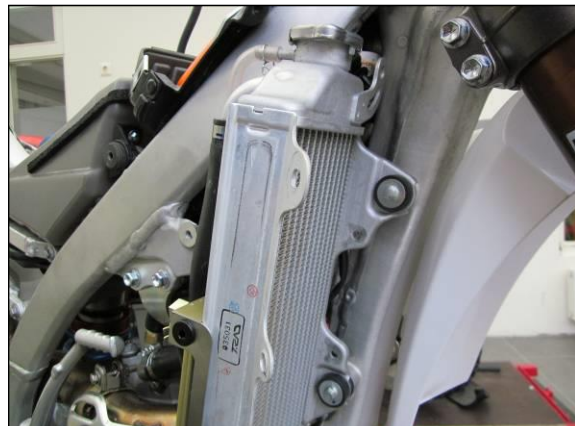
Step 3:

Assemble the oil-cooler and radiator back onto the frame with the stock bolts (Like picture 5 and 6).

Picture 5



Picture 6



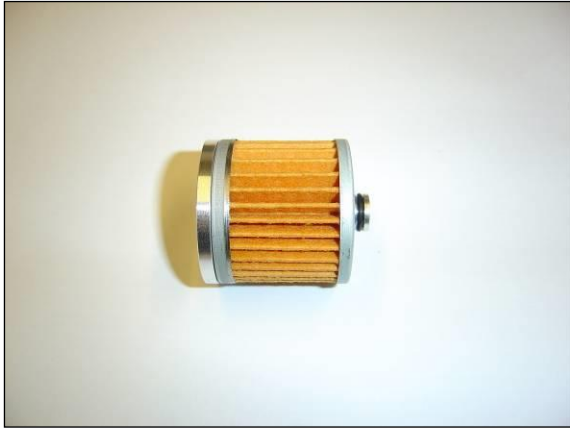


Oil Cooler Installation Instruction

Step 4:

Install the center-tube through the smallest hole of the oil-filter, install the o-rings and assemble it on the oil filter cap and install the oil filter unit on the engine. (Like picture 7 and 8)

Picture 7



Picture 8



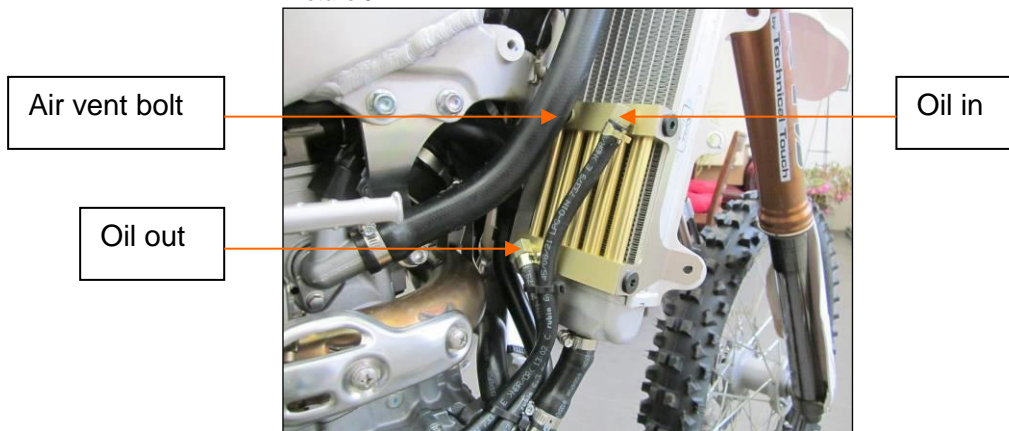
Step 5:

Install the oil cooler hoses like the assembly diagram (like picture 9 and 10)

*Hose 1 connects oil-out from the filter cap to oil-in on the radiator (cut the hose to the length).*

*Hose 2 connects oil-out from the radiator to oil-in on the filter cap (cut the hose to the length)*

Picture 9



Picture 10



Step 6:

Use two nylon zip ties to attach the oil-hoses to the water-hose (Like picture 10).



Step 7:

Fill the engine with oil, adding 150 ml more oil.

Step 8:

Start the engine and let it idle.

Step 9:

Stop the engine after 2 minutes and check if there is air in the cooler by opening the air vent bolt (picture 9). If oil comes out, the system has been bleed properly. If air comes out, redo step 8 and 9 until oil comes out.

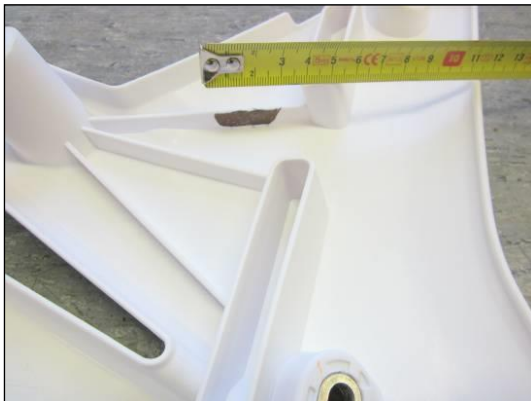
Step 9:

Check oil level and top off if necessary.

Step 10:

Cut the blackened portion of the Radiator Shroud rib (picture 11). This is 85mm and 115mm of the side of the shroud.

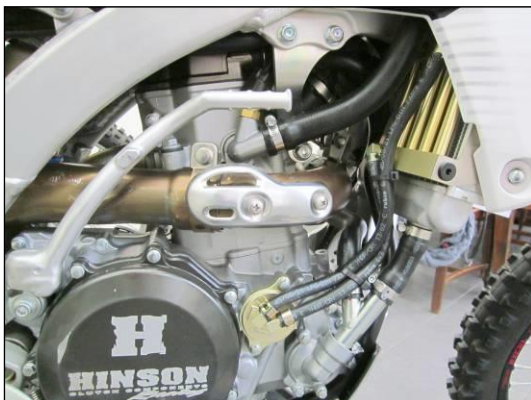
Picture 11



Step 11:

Re-install the right side radiator shroud using the OEM bolts. (Like picture 12)

Picture 12





Step 12:

Mount the protection bracket as shown on picture 13.

Picture 12



*The replacement Oil Filter for this Oil Cooling System is: 140118.*